

## PEEM Series Single Phase Digital Electricity Meter



### FEATURES

- Provides real-time data for balancing electric loads.
- Voltage, current, frequency, active power, reactive power, etc. can be easily read from the LCD screen.
- Bi-directional measuring.
- Standard DIN rail 35mm.
- With RS485 interface and ModBus/RTU communication protocol for networking.
- Stored data is safe at power loss.

### APPLICATION SCENARIO

- 1 Accurate bi-directional measuring of PV system power generation.
- 2 Measures the consumption and feed-in power.
- 3 Communicates through RS485 with on-grid inverter or energy storage inverter to realize anti-PID.
- 4 Communicates with AC coupled inverter or energy storage inverter to realize the logical control of charge and discharge.

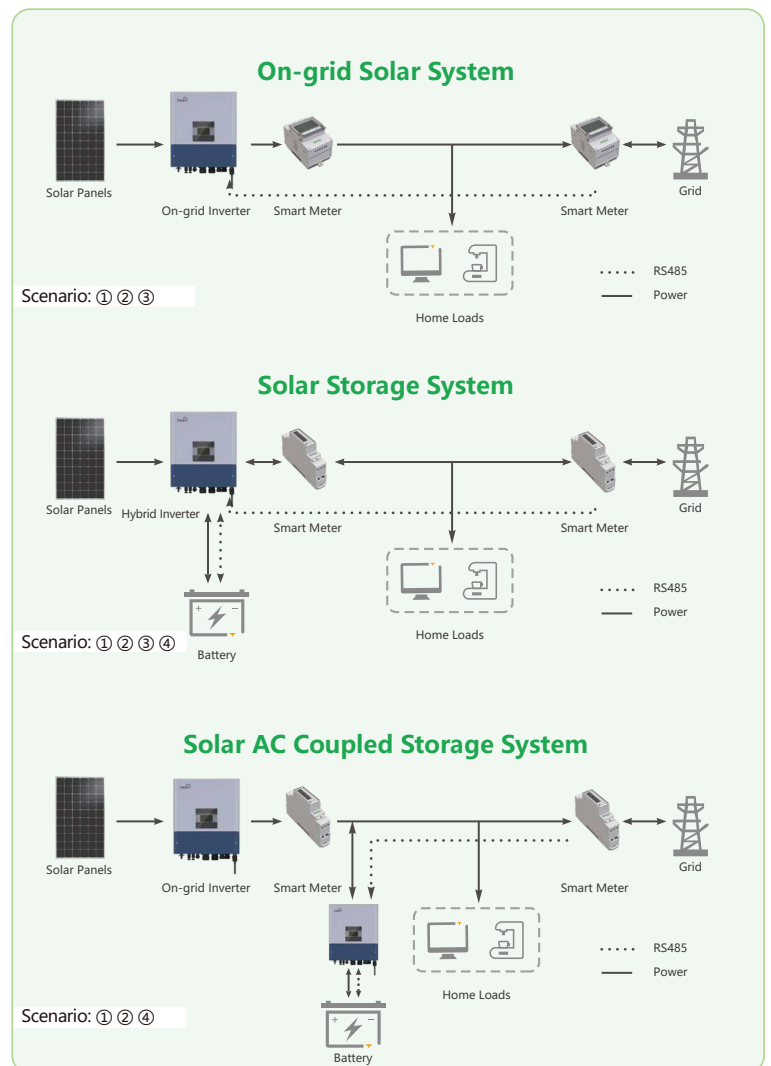
## Funtions

By sampling, measuring and monitoring the electric energy parameters, and communicating with the inverter, the functions of anti-PID, regulation of power generation, battery charging and discharging, etc. are realized. It adopts standard DIN35mm rail type installation, which has the advantages of small size, convenient installation and easy network formation. It has two-way metering function and is widely used in new energy generation systems such as PV grid-connected systems, micro inverter systems, energy storage systems and AC-coupled systems.

## Select Code

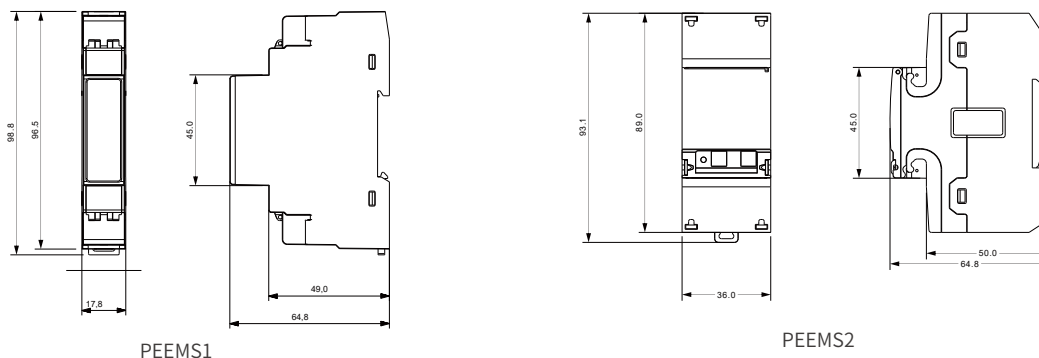
PE	EM	S/T	※	※
↓	↓	↓	↓	↓
PROJOY Electric	Electricity Meter	Single Phase/ Three Phase	Current rating 1: 45A 2:100A 3: 6 (CT) 4: 65A	Communication Mode 0: None 1: RS485 2: Pulse output

## Scenario Diagram



### ProJoy Electric Co., Ltd.

## Dimensions



## Specifications

Standards: IEC62053-21, IEC62052-11		PEEMS1	PEEMS2
Electric parameter	Current type	Single phase load, Direct connection	Single phase load, Direct connection
	Nominal voltage	230VLN AC (AV8 optional), 120VLN (AV7 optional)	
	Voltage range	161~276VLN AC (AV8 optional), 84-145VLN (AV7 optional)	
	Current range	5(45)A	5(100)A
	Frequency	45-65Hz	
	Power	0~9000.0W	
	Power factor	0~1.00	
	Energies	0~999999.9	
Accuracy	Voltage	0.5% of range maximum	
	Current	0.5% of nominal	
	Frequency	0.1Hz	
	Active	1% of range maximum	
	Reactive	2% of range maximum	
	Power factor	0.1	
Temperature drift		≤200ppm/°C	≤200ppm/°C
Energy consumption		1W/10VA	1W/10VA
Display and touch key-pad	Type	LCD, 7-digit	LCD, 3x 8-digit
	Read-out	Energy: 7 digit	Energy: 8 digit
Communication mode		pulse output RS485 Modbus port	
Operating temperature		-20 to +70 °C,	
Storage temperature		-25°C to +80°C	
Humidity		0 to 95%, non-condensing	
Elevation		up to 2500m	
Housing	Dimensions (WxDxH)	17.8 x 64.8 x 98.8 mm	36 x 64.8 x 93.1 mm
	Material	PA66: UL 94V-0	
	Sealing covers	Included	
Mounting		DIN rail	
Protection degree	Front	IP51	
	Screw terminals (cable inputs)	IP20	
Weight		80g	160g